

# Wired

**PRODUCT UPDATE DEC 2009**



### Atlona PC to Computer Monitor/HDTV Wireless adapter (Now With Audio!!!). Model: AT-HDAiR

The all new AT-HDAiR is designed to connect any Windows Based computer to either your HDTV or Computer Monitor wirelessly though VGA or HDMI Connections. The HDAiR is based on a powerful UWB technology, allowing users to extend high resolution content up to 30ft away. Atlona adapter is capable of supporting resolutions up to 1400x1050 or 720p. The AT-HDAiR is features with dual video (HDMI and VGA) and dual Audio (HDMI-Audio and 1/4" mini stereo) outputs. Both outputs are active simultaneously.

Whether wirelessly connected to a projector in a meeting room or to a flat TV screen in the living room, the the Atlona HDAiR allows users to easily and conveniently extend their PC visual workspace. Providing both HDMI interface, common in flat TVs, and VGA interface, common in projectors and computer monitors—the HDAiR provides users with the flexibility. Both HDMI and VGA output connections are active at the same time, therefore HDAiR receiver could be used to power up 2 displays at the same time with identical content.

This product is HOT!! Ask the Wired Team about it today



### Atlona DVI to Mini DisplayPort Converter (All New with USB-Powered). Model: AT-DP200

The Atlona AT-DP200 is a DVI to Mini DisplayPort converter designed to convert every Mac or PC computer's DVI or mini-DVI signal to a digital signal over a Mini DisplayPort connector, which is currently used on the Apple 24" Display and iMac 27". The AT-DP200 allows users to extend their desktop to an Apple 24" or iMac 27" (or similar DisplayPort display). Users can use the connected monitor as their main display or extend their desktop using it in addition to their laptop's screen.

The Atlona DVI to Mini-Display Port Converter is compatible with all Apple and PC Computers which have a DVI or Mini-DVI connections. The new DP200 is featured with Attached DVI cable and USB Power source. There is no more need for an external Power supply.



### Atlona USB to HDMI Converter. Model: AT-HDPiX

The all new USB to HDMI adaptor, the AT-HDPiX. This new solution is designed to add a HDMI port to any computer (Mac or PC) making it a simple solution for viewing content from a computer on any HDTV and has limitless applications in both consumer and commercial environments. Set up is as simple as plug and play; convenient for any user, no matter the level of technical knowledge. Connect up to 6 x AT-HDPiX to a PC and up to 4 x AT-HDPiX to a Mac.



### Atlona 3x1 (1.3b) HDMI Automatic Switch with 6ft Pro-HDMI Pigtail. Model: AT-HAD-V31

Atlona's AT-HAD-V31 is a high performance 3x1 HDMI Switcher. Switcher has an intelligent AUTO function, which would automatically select the newly powered on source. The AT-HAD-V31 is based on the Silicon Image HDMI 1.3b chip-set and therefore capable of passing-through the highest resolutions up to 1080p. Permanently attached is a 6ft Pro HDMI Cable to this particular switch.





**Atlona Video / S-Video to VGA or Component Video Converter Scaler. Model: AT-AVS-COMP**

The AT-AVS-COMP allows older analog devices to be integrated seamlessly into modern home theater. This device scales Composite and/or S-Video resolutions to HDTV resolutions, and outputs over component or VGA to be connected with a HD Display or Projector. This will allow analog video devices to perform at HDTV resolutions such as 1080i, 720P or 1080p via VGA or Component Video interface. Change inputs and resolution with a remote control included with this converter.



**Atlona VGA or Component Extender with Analog/Digital Audio over Cat5 up to 165ft (50m). Model: AT-RGB50SR**

A great solution for extending VGA or Component Video signal over single Cat5 or Cat6 cable up to 165ft without signal degradation. The AT-RGB50SR can handle any resolution up to 1080p or 1600x1200. Analog Audio and Optical connections can also be extended over the same Cat5. Installation is quick and easy, simply place Sender unit next to HDTV source, place Receiver unit next to display, then connect single Cat5 cable between the sender and receiver units and you are done.



**Atlona VGA with Audio Extender over Cat5 up to 600ft. Model: AT-VGA180ASR**

The smallest VGA Extender in the industry, the main body is as big as a VGA connector and able to transmit VGA + Audio via Cat5/5e/6 cable up to 600ft. The AT-VGA180ASR is so powerful that it can transfer very high resolutions up to 2048x1536 up to 600ft. Extender kit also extends analog audio signal along with video and all over single cat5/cat6 cable.



**Atlona DVI CAT5 Extender 50M (SENDER/RECEIVER INCLUDED). Model: AT-DVI50SR**

Our Smart DVI CAT5 Extender uses two CAT5E/6 cables to extend your DVI display up to 50 meters (165ft) at 1920X1200 from your HDTV DVI or HDMI source. It features a local monitor DVI loop out, giving you the option of having both an extended monitor, and a monitor at you DVI source.



**Atlona Powerless HDMI Extender over Cat5/Cat6. Model: AT-HD30SR**

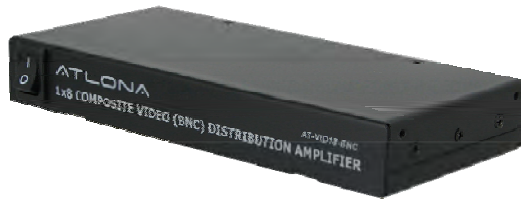
The AT-HD30SR is designed to replace long runs of HDMI cable with CAT5E/6 cable. (Wired recommends using CAT6 cable for all extender products). This product is capable of extending 1080p signal from any HDMI or DVI source up to 30 Meters (100 ft.) with no signal degradation.



**Atlona RS-232 Extender over Twisted Pair Cat5/6 up to 825ft. Model: AT-RS232SRS**

The AT-RS232SRS is an affordable solution providing control of any RS-232 protocol device. The AT-RS232SRS consists out of 2 x boxes; one takes RS232 9-pin connector and converts it to Twisted Pair (Cat5/6). The other box converts back from twisted pair to RS232. Extender units can be placed as far as 825ft away of each other. The transmitter unit will send RS232 as well as power to the receiver.





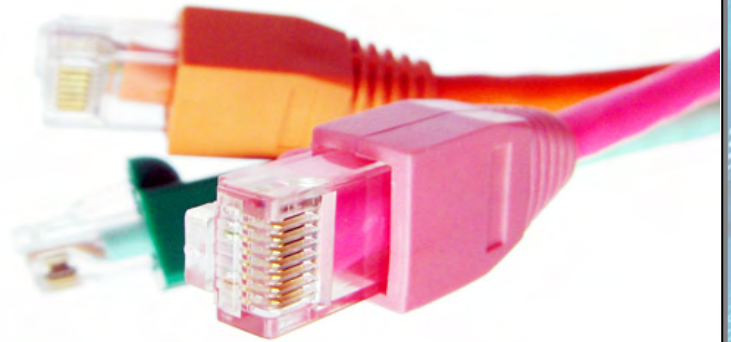
### **Atлона 1x8 Composite Video Distribution Amplifier. Model: AT-VID18**

The Atлона AT-VID18 is one of the most innovative Composite Video signal distribution amplifiers on the market today. This 1x8 Composite Video Distribution Amplifier is the perfect solution for anyone who needs to send one source of high quality composite video to multiple displays at the same time. With 1 Composite Video Input and 8 Composite Video Outputs, the AT-VID18 is capable of sending signal from one source to all 8 desired displays at the same time at lengths up to 200ft without signal degradation. This unit is perfect for applications for distributing signals from VCRs, Camcorders, Video Game Consoles, DVDs, Satellite Receivers, Set Top Boxes, etc.



## **Cable Making at its best only From Wired Limited.**

- Cat 6 and cat 6A
- UTP / STP /FTP/SSTP
- AV leads
- Controller Leads
- Phone Leads
- Multimedia AV Leads
- Adaptors



**[www.wirednz.co.nz](http://www.wirednz.co.nz)**

## **Visit Our Showroom**

### **Wired New Zealand Limited**

Unit B, 2 Centennial Highway, Ngauranga, Wellington

Ph: 04 499 4110, Fax: 04-499 4114

email: [sales@wirednz.co.nz](mailto:sales@wirednz.co.nz)



**[www.wirednz.co.nz](http://www.wirednz.co.nz)**