



## Providing Effective Solutions for Audio Visual Systems

# Keyboard / Mouse PS-2 Converter



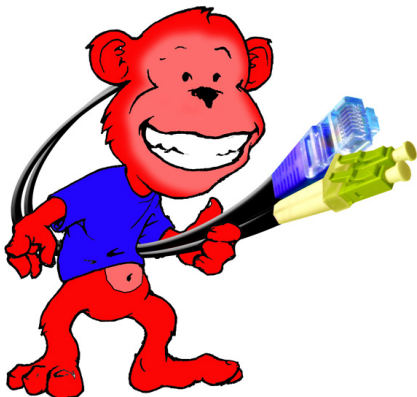
**Keyboard / Mouse PS-2 Converter**  
**Part Number: E10800KMC**



**PC End**  
**Part Number: E10800C**



**Keyboard / Mouse End**  
**Part Number: E10800KM**



### Features:

- Connects a standard PS-2 Keyboard & Mouse to a PC via Cat 5e Cable
- High Reliability and Durability
- Housed in a fire retardant wall mountable Case
- Low cost, high quality and performance
- Passive device (no power supply required)
- Stable over working temperature between 0 °C to +55 °C

### Application:

The Keyboard / Mouse PS-2 Converter allows the connection of a standard PS-2 Keyboard and Mouse to a PC via Cat 5e/Cat 6 UTP cable.

Used as a set, this converter can be used for distances up to 100m.

For KVM applications, the PS-2 Converter can be used with the VGA Balun (P/N E10680CM) for distances up to 45m.

### Specifications:

Bandwidth:	DC to 1 MHz
Connectors:	PC End: Dual Din Plug (Green for Mouse, Purple for Keyboard) with 150mm cable KM End: Dual Mini Din Socket (Green for Mouse, Purple for Keyboard)
Maximum distance:	Up to 100 metres over Cat 5
Cable UTP:	24 AWG or lower solid copper twisted pair wires
	Impedance: 100 ohm at 1MHz
	Max. Cap: 20 pf/ft
	Attenuation: 6.6dB/100ft at 1MHz
RJ45 Pin Configuration:	Mouse: Pin 1: Ground / Pin 2: Clock Pin 3: +5V / Pin 6: Data Keyboard: Pin 8: Ground / Pin 7: Clock Pin 5: +5V / Pin 4: Data
Mini Din Pin Configuration:	Pin 1: Data / Pin 3: Gnd / Pin 4: +5V / Pin 5: Clock
Temperature:	Operating: 0 to 55° C Storage: -20 to 85° C
	Humidity: Up to 95%
Dimensions:	PC End: 51 x 24.2 x 29.3mm + 150mm Cable K/M End: 49.2 x 43 x 21.5mm

Note: Specifications subject to change without notice.