



Providing Effective Solutions for CCTV Security Systems

16 Port Versatile Balun Hub



Versatile Balun Hub
16 Port RJ45 – BNC Female
Switch Selectable Functions
Part No: E10700A

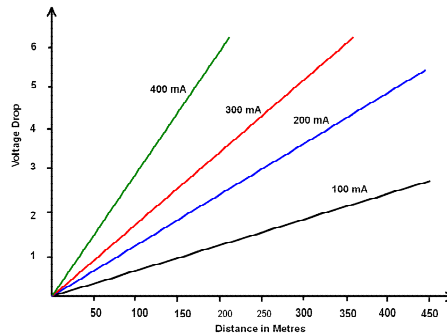
Features:

- Versatile 16 Port Video or Video + Power or Video + Power + PTZ Data.
- Mode of operation between Video + Power or with PTZ Control Data is switch selectable.
- Feed AC or DC Power up Cat 5 Cable to Camera
- BNC Female Jack for Video connections and Screw Terminals for Power and PTZ Data Connections.
- Standard 19" 1 RU Rack Mounting
- Exceptional performance, High Reliability and Durability
- High quality and performance
- Stable over working temperature between 0 °C to +55 °C

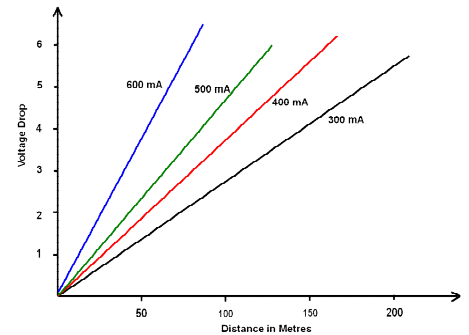
Application:

Cat 5 cable backbone in combination with Single Balun and Power Through Baluns and PTZ Baluns will achieve a cost effective and reliable CCTV installation providing greater interference immunity than traditional coaxial cable backbone.

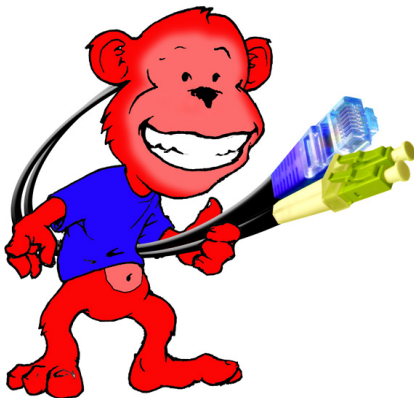
The distance between the camera and the hub depends on the balun selected and power requirements of the camera. The figure below will serve as a guide in determining the approximate distance that can be achieved noting that with PTZ baluns the maximum distance will be about 70 metres.



E10524



E10522



Specifications

Bandwidth:	DC to 8 MHz
Insertion Loss:	< 2 dB to 8 MHz
Impedance:	75 ohm BNC, 100 ohm RJ45
Maximum Signal Voltage:	1.1 Vp-p
Return Loss:	> 15 dB to 8 MHz
Common Mode Rejection:	> 40 dB @ 8 MHz
Interface:	16x BNC female for Video Out 16x RJ45 Jack unshielded 16 x 4 Pole Screw Terminal for Power and PTZ Control
RJ45 Pinout:	Video 7+/8- for video Power 1, 3, 5 + and 2, 4, 6 – switch in power mode Power 1, 3 + and 2, 6 – switch in PTZ mode and PTZ control 4+/5-
Temperature Range:	0 to 55 °C operating, -22 to 80 °C Storage 95% RH
Maximum Distance:	Video Only Color: Up to 400 m Video and Power: Up to 300 metres (Note 1) Video Power PTZ: Up to 70 metres (Note 1)

Note 1: Maximum distance is dependent on camera, power supply and environment.