



TO GET YOUR NETWORK CONNECTED



BNC Female Straight Crimp Bulkhead



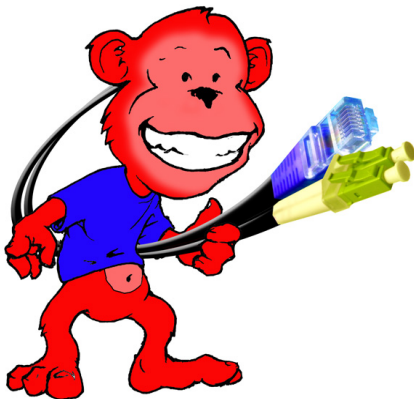
BNC Female Straight Crimp



BNC Female Vertical PCB



BNC Female BNC Female Bulkhead Adaptor Isolated



BNC Female Connectors

Applications

Broadcast
Cable Assemblies
Telecommunications

Electrical Characteristics

- Impedance is 50 or 75 nominal ohm with 75 ohm Standard.
- Frequency Range: DC to 1.5 GHz Standard.
- Voltage Rating: Up to 500 Vrms
- Dielectric Rating: Up to 1500 Vrms for 1 minute
- VSWR: 1.25 max
- Insertion loss 0.25dB + 0.1db @ 1 GHz.

Physical Characteristics

Mechanical

- 2 stud bayonet coupling to M39012
- Center conductor is crimp or solder type
- Braid/Jacket is crimp type
- Cable retention of crimp 10 Kg min

Materials

- Connector Body: Brass
- Pin: Brass
- Crimp Ferrule: Brass
- Insulator: PTFE

Finish

- Nickel
- Nickel

Part Numbers

BNC Female Straight Bulkhead E40820CR/**
BNC Female Straight E40825CR/**
BNC Female Vertical PCB E40820PCB
BNC Female BNC Female Bulkhead Adaptor Isolated E40840I

** Add Cable type eg BT3002 RG179 RG8

Note: Specifications subject to change without notice.